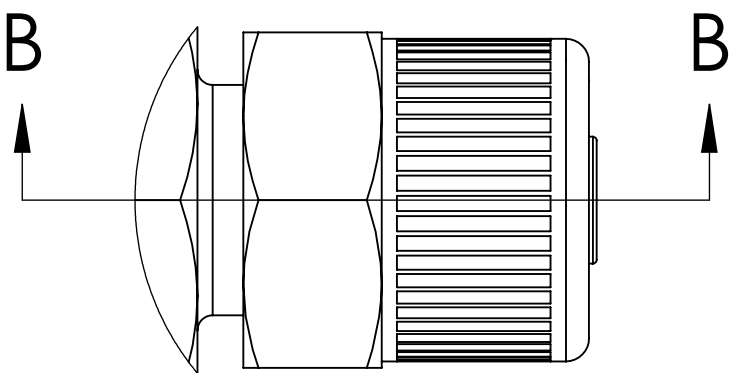
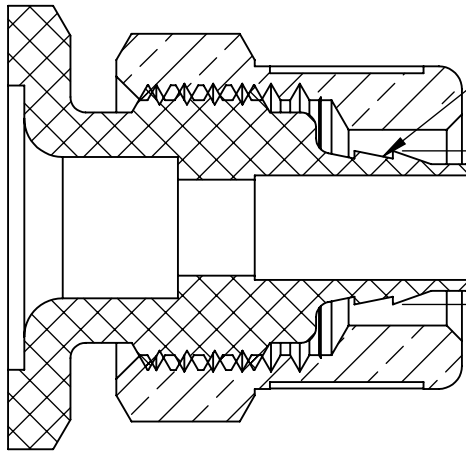


REVISIONS						
SHEET	ZONE	REV.	ECO	DESCRIPTION	DATE	APPROVED
1	ALL	A	50253	DWG DRAFTING UPDATE	5/15/2018	HRC



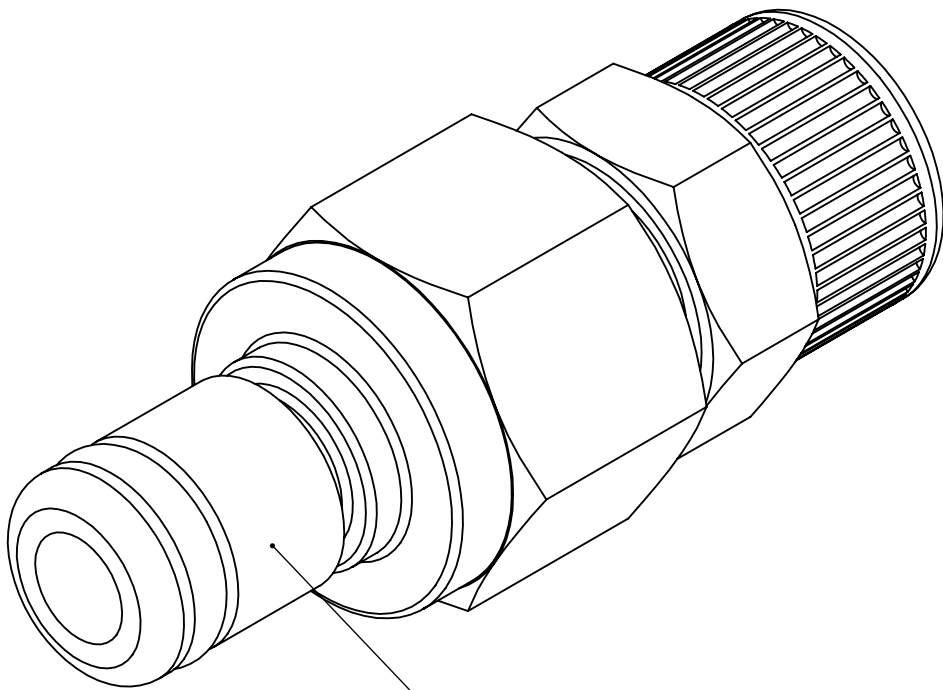
DETAIL A

1/4" OD TUBE

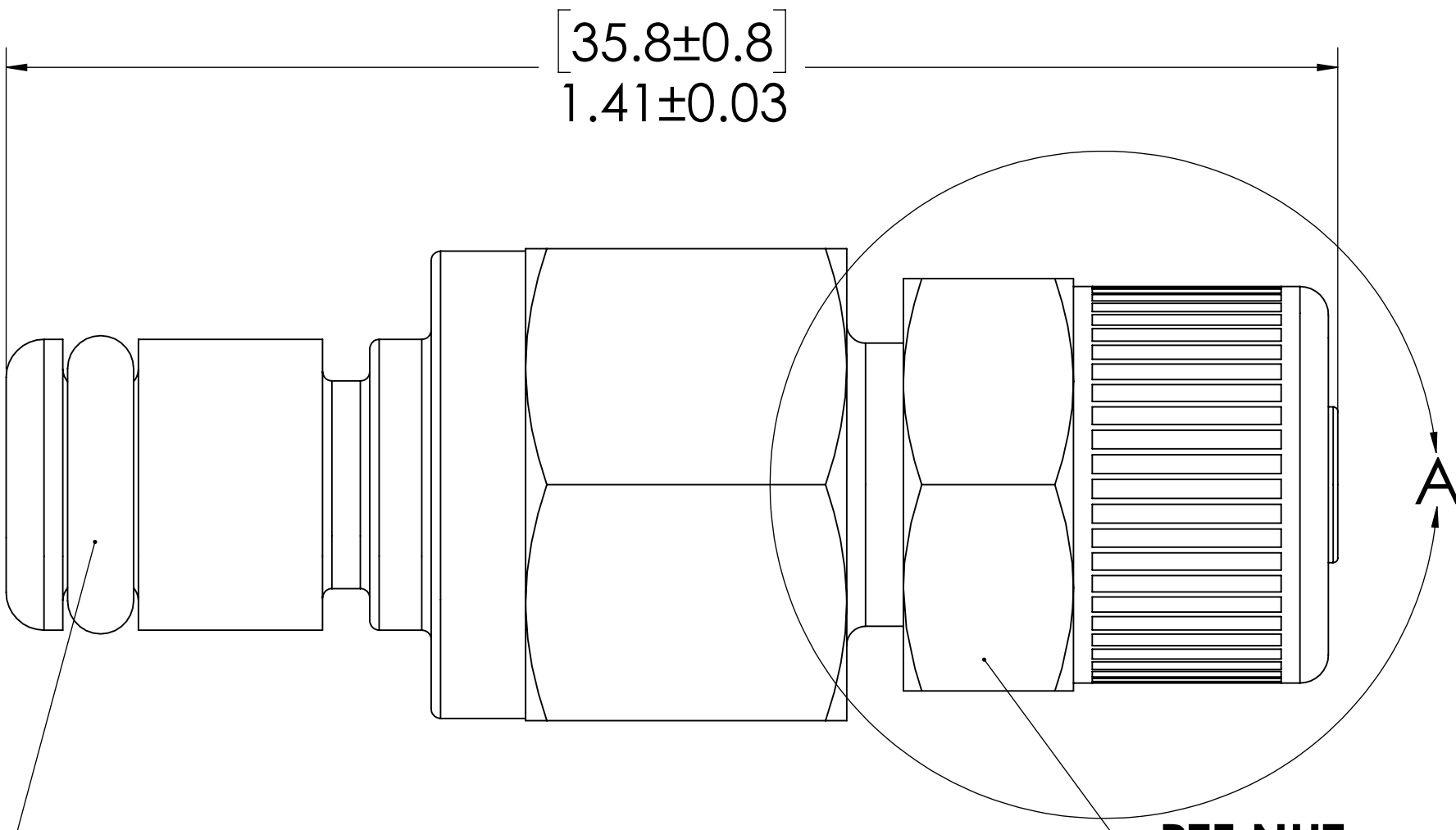
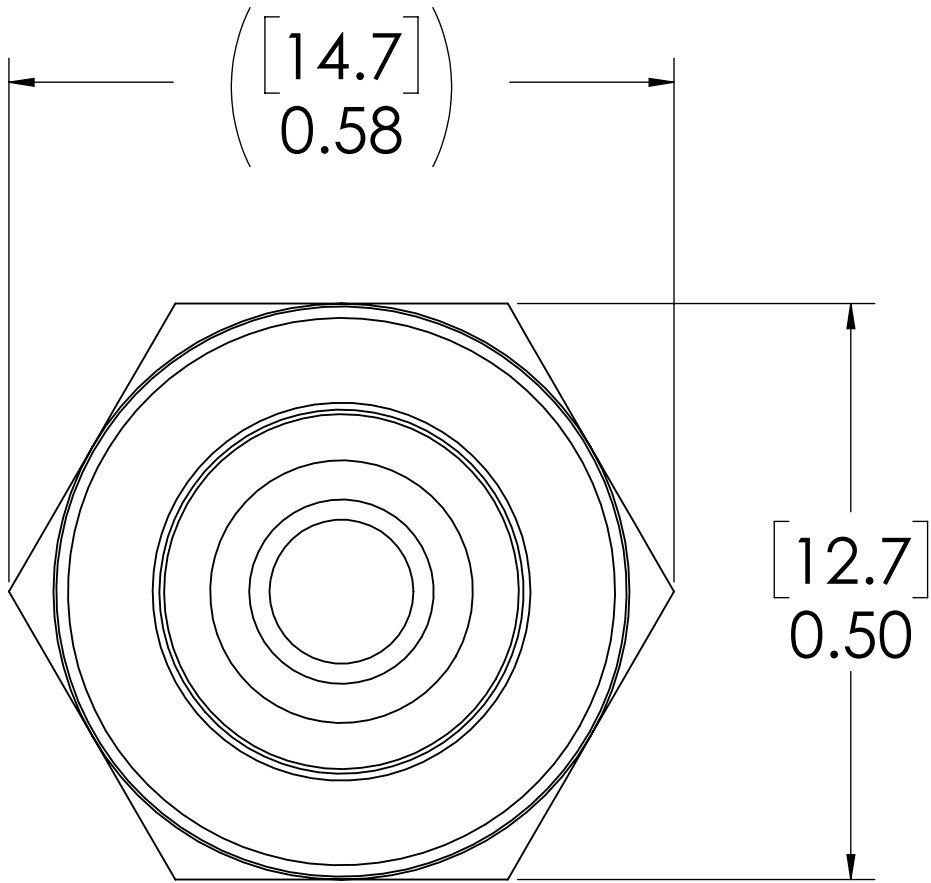


[5.1]
Ø 0.20

SECTION B-B



PLUG,
(ACETAL)




O-RING,
(BUNA-N)

PTF NUT
(BRASS, NICKEL PLATED)
(PACKAGED SEPARATELY)

- NOTES:**
- 1. MATERIAL: ACETAL
 - 2. COLOR: NATURAL WHITE
 - 3. O-RING MATERIAL: BUNA-N
 - 4. O-RINGS LUBRICATED WITH FOOD GRADE SILICONE OIL, 350 CST.

FOR REFERENCE ONLY

UNLESS OTHERWISE SPECIFIED: DIMENSIONS ARE IN INCHES TOLERANCES: FRACTIONAL ±1/32 ANGULAR: MACH ±0.5 BEND ±2 ONE PLACE DECIMAL ±0.1 TWO PLACE DECIMAL ±0.01 THREE PLACE DECIMAL ±0.005 TWO PLACE DECIMAL (mm) ±0.12 PROPRIETARY AND CONFIDENTIAL THE INFORMATION CONTAINED IN THIS DRAWING IS THE SOLE PROPERTY OF LINKTECH LLC. ANY REPRODUCTION OR DISCLOSURE IN PART OR AS A WHOLE WITHOUT THE WRITTEN PERMISSION OF LINKTECH LLC IS STRICTLY PROHIBITED.	DRAWN		NAME	DATE	 PART NO: 20AC-PB9-04 DESCRIPTION: LinkTech 20AC Series Straight Male, Non-valved, 1/4" PTF, Natural Acetal
	CHECKED		HRC	8/3/2017	
	ENG APPR.		HRC	5-15-18	
	MFG APPR.		BDB	5-15-18	
	PRODUCTION		RK	5-15-18	
COMMENTS:					SIZE DWG. NO. REV C 20AC200386 A
SCALE: NTS		WEIGHT:		SHEET 1 OF 1	